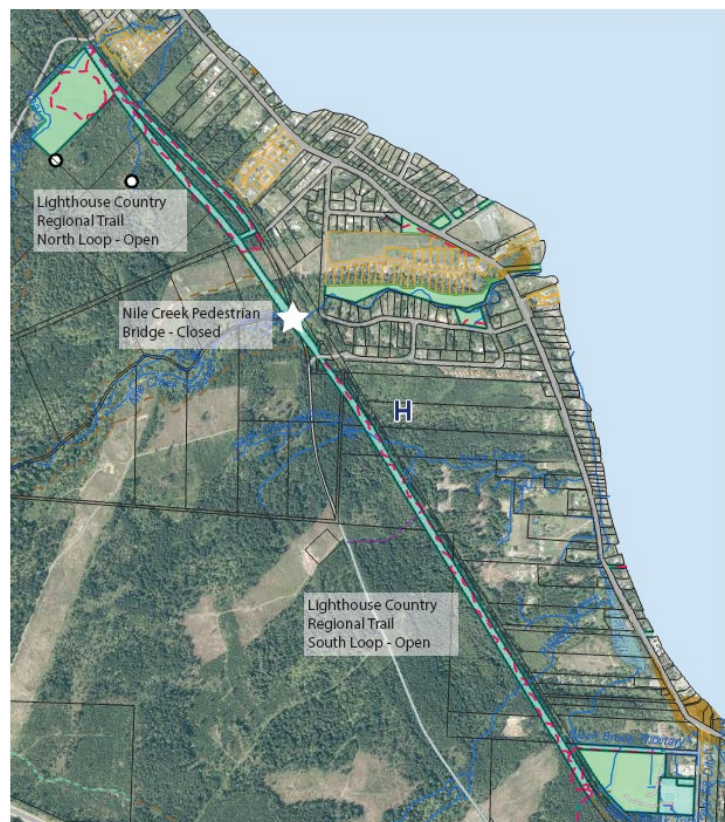


Nile Creek Pedestrian Bridge Closure

The pedestrian bridge over Nile Creek, located just downstream of the fish hatchery, will be closed until further notice. The bridge has reached the end of its lifespan and is unsafe to use.


The north and south loop of the Lighthouse Country Regional Trail are unaffected and remain open. Planning for the removal and replacement of this bridge is underway. Thank you for your understanding.




For more information, please contact:

Parks Services

Regional District of Nanaimo

 1-888-828-2069

 rdn_parks@rdn.bc.ca

Get Involved RDN!