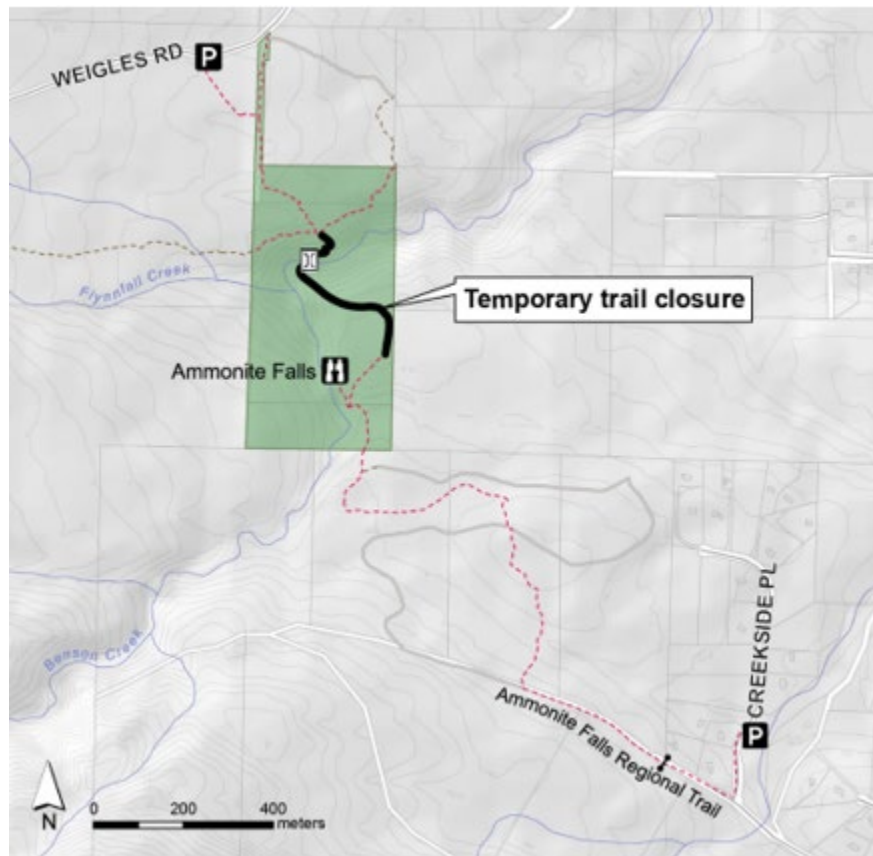


Benson Creek Falls Regional Park - Temporary Trail Closure

A section of trail within Benson Creek Falls Regional Park in Electoral Area C will be closed April 7 – 16, 2025, for slope erosion repair. Visitors to the park will not be able to access Ammonite Falls from the Weigles Road parking lot during this time. For your safety, please be cautious, remain alert to construction activities when using the park and obey personnel and signs posted on site.



For more information, please contact:

Parks Services
Regional District of Nanaimo



1-888-828-2069



rdnparks@rdn.bc.ca

Get Involved RDN!